

The Effect of the Anomalous Magnetic Fields on Malignant Diseases

Trifunovic Nikola

Retired Geophysicist, Geoinstitute, Belgrade, Serbia.

Abstract

Introduction

Natural earth's magnetic field (EMF) is the promoter of mother cell division into two daughter cells. Cancer is the cell which divides unlimitedly and destroys the body. Show that cancer (Ca) occurs in anomalous magnetic field (AMF) located in diseased people's beds. Move the diseased away from the AMF and follow their health conditions. Explain etiopathologic unclearances from medical literature and improve therapy. Explain that the risk factors, as causes of Ca, are interpreted incorrectly in medical literature, prove that these are effects of the AMF existence in dwelling places.

The Materials and Methods

Measuring of AMF in patients' beds was performed by a proton magnetometer, (precision 100 nano Teslas). Measuring points are on square net, 10x10 cm. The results are shown with contour lines on the drawings. The health status of residence in the Earth's natural magnetic field (EMF) was monitored. The etiological data from the literature are explained. An experiment was performed in a psychiatric hospital with 40 patients.

Results and Discussion

Research lasted more than 25 years. The AMF were measured in 2000 patients' beds. There was a correlation between the AMF and the location of the diseased organ. The AMF surfaces were shown in beds where the diseased organ is, on the contrary, there were natural values of the EMF in the rest of the bed surface. Furthermore, the results found that three cases of breast cancer with metastases survived after surgical interventions and subsequent removal into the natural EMF in contrast to 26 cases with the same diagnosis and surgical interventions who died after a short period and staying in the AMF. Another example was brain malignancy (glioblastoma multiform, stage IV), which was decreased by living in the natural EMF for six years. In the same clinic, with the same diagnosis, three patients died because they were not moved away from the AMF. Those presented are the cases of breast malignant disease with metastases. The patients refused chemotherapy, accepted only surgical operation and removal of the AMF. They have all recovered. Three patients with head, prostate tumors and breast Neo are presented, who, after removing of the AMF, recovered with no medical intervention at all.

Conclusion

There was a visible improvement of health with patients who stayed in the natural EMF. The correlation between Az and the diseased organ was determined by measuring the AMF. Knowing the effects of the AMF and the natural EMF, all the literature ambiguities from etiopathology were explained. It was concluded that the medical risk factors are not causes of cancer. It is necessary to improve the treatment of the patients with Ca with construction of hospitals with no AMF and introduce hyperthermia therapy in the natural EMF. The AMF located in the patients' beds are the sole cause of Ca. This conclusion is suggested in the experiment done in the psychiatric clinic, too.

Corresponding authors: Trifunovic Nikola, Retired Geophysicist, Geoinstitute, Belgrade, Serbia, E-Mail: ntrifunovic41@yahoo.com

Received: January 02, 2020, **Accepted:** January 19, 2020, **Published:** January 23, 2020

Keywords: Earth's Magnetic Field, Anomalous Magnetic Field, Malignant Disease and Metastases

Introduction

After facing malignant diseases in the family and talking with doctors it has been found that there are three main cancer causes: viral, chemical (cancerogenous substances) and physical. Doctors' comment is: we know a lot about the viral and chemical agents, but not much is known about the physical. This has been the reason to start geophysical measurements of physical fields in the places where people suffering from cancer, cardiovascular disease, diabetes and mental disturbances live. The measurements lasted for more than 25 years. Physical fields were, also, measured in the places where people suffering from some other diseases live, but not so extensively. It was immediately found that people suffering from cancer sleep in beds with characteristic EMF values, of much higher intensities than the natural EMF, called the AMF, or lower, anomalous zones (Az). At first, radioactive radiation was measured and it was always within the scope of natural quantities, so there was no need to continue measuring it. Pathology professor at the Pathology Institute, enabled observation of a microscopic cancer preparation. This looked like microscopic serpentine preparation (a very magnetic ultrabasic rock), containing bits of magnetite as phenocrysts. This was a stimulation for even more extensive cancer cause investigation. Simultaneously with in-situ measurements, biological and medical literature was studied, particularly regarding etiology and pathology. It has been understood that cancer is the cell gone wild dividing itself endlessly and destroying an organ and organism, consequently. But it has been realised that biological science does not know what a mother cell into two baby cells division promoter is. Soon, the paper "Breathing Enables the Magnetic Properties of Erythrocytes (Hem Fe) Oxygen, Cells and Carbondioxid" gets published, fully explaining: [1]. a mother cell division into two baby cells; 2. malignant diseases genesis; 3. it has been found and proven that the magnetic characteristics of a person's breathing enable respiration, and the constant fallacy that diffusion and partial pressure enable respiration has been eliminated; 4. the nervous system functioning in respiration regulation has been clearly explained. It can freely be stated that this scientific work is fundamental for all further biology and humanistic researches. The

aim of this work is: to prove, by measurements, that the malignant diseases are formed in the AMF in the beds of the diseased people; to move the diseased away from the AMF and to observe their health conditions; to explain etiopathological obscurities from the medical literature by understanding the AMF and the natural EMF; to present the results obtained in this paper. This paper: "The Effect of Anomalous Magnetic Fields on Malignant Diseases" is a particular addition of the malignant diseases genesis, theoretically presented in the literature [1].

Work Methods

In the research, the attention has been paid to geomagnetic field. By measurements, EMF spatial changes have been discovered, i.e. the locations of the AMF have been found. The AMF, ie. Az, appears because of the incorrect placement of the magnetic things in the living spaces. There are, also, variable magnetic fields, originating from the electromagnetic fields, characteristic for every Az. Measurement techniques are geophysical instruments, and geophysical measurements and interpretation of the measured values performed. People place things in the wrong way and, being unaware of it, surround themselves by the materials which are pollutants of the living spaces-magnetic and electro-magnetic "smog". Measurements of the AMF in the diseased people's beds were performed. Measuring points were on the square net, 10x10 cm. The results are shown with contour lines on the drawings. Prelocation of beds away from the Az into the space with the EMF took place. The health condition was observed during the stay in the EMF. Etiological data from literature were explained.

Measurement Results

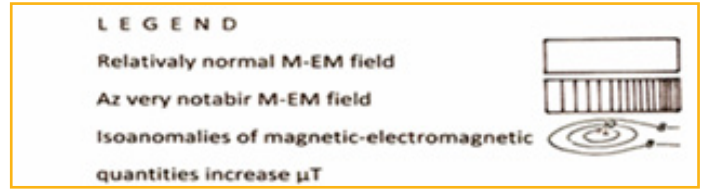
The total resulting intensity vector of the whole AMF was measured. The instrument was "protonic magnetometer", 100 nT (nanoteslas) factory precision. The results obtained are presented graphically in the sketches in the forms of iso-anomalies (lines with the same AMF quantities), given in microteslas (μT). The Az on beds used for night and day rest by a person with malignant neoplasms (Neo), as well as the diseased ones with metastases (meta) are shown in the sketches. Diagnoses are, mostly, given by the Institute for

Oncology and Radiology, Belgrade. The disease classification is in accordance with the international classification (IDC-10) [2]. The medical therapy included therapy directives and surgical operations advised by a council. It should be pointed out that, for the good therapeutic results, the most important thing is to move the patient away from the Az and place him/her in the natural EMF.

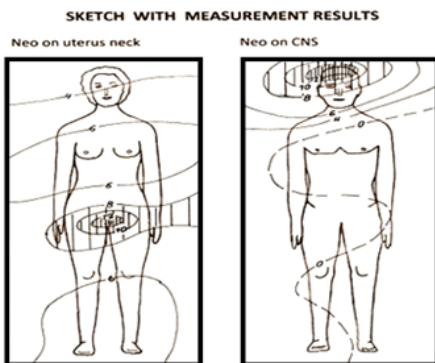
Sketches with Only One Az In Bed

Sketch 1 shows Neo on cervix C 53.1. This sketch shows magnetic field status in a single bed. On the central part of the single bed an Az is found (over 10 μT) covering the bed user’s genital region. The Az has caused Neo on cervix appearance. The Az and the location of the pathological changes connection is obvious. This bed user is moved to another bed with no Az. The woman, using the bed with no Az for over 20 years, is completely healthy. An interesting thing happened to her husband, who ignored the findings. He moved to sleep in the wife’s first bed shown in the sketch 1 with Az and, after six months he got leg joint atherosclerosis and the beginning of gangrene on his left leg. He was advised by one of this paper’s author (TN), to place the bed into another location. After medical intervention, he gets healthy.

Sketch 2 shows Neo on CNS C 71.2. This single bed’s space is mostly undisturbed because the quantities were, mostly, of zero increase. One Az was found in the upper central bed’s part. The bed user’s forehead entered a distinct Az. After two years from sleeping in this space, he had got brain Neo. The connection was fully confirmed. Suggestion was given what the diseased should do to use the space with no Az.



Sketch 3 shows Neo on CNS Glioblastom multiforme IV. This single bed space was, mostly, undisturbed because in the most part of it the natural magnetic field was found, except in the upper central part with a distinct Az, over 10 μT, causing Neo on CNS. The person was moved away and placed into the area with no Az. The connection between Az and the disease was obvious. After surgical operation, relapse with dimension appeared, as shown in CT record in figure 1. After that, the person was moved away from the Az. Moreover, figure 2 shows the Neo CT record after one year of staying in the natural EMF Figure 2. For six years there were neither relapses nor meta. Another three patients had this Neo type at the same time and they were all treated with the same therapy. However, two years later, four patients died and only the patient who, after relapses, was moved to spend her day and night rest in the natural EMF, survived.



Sk.1

Sk.2

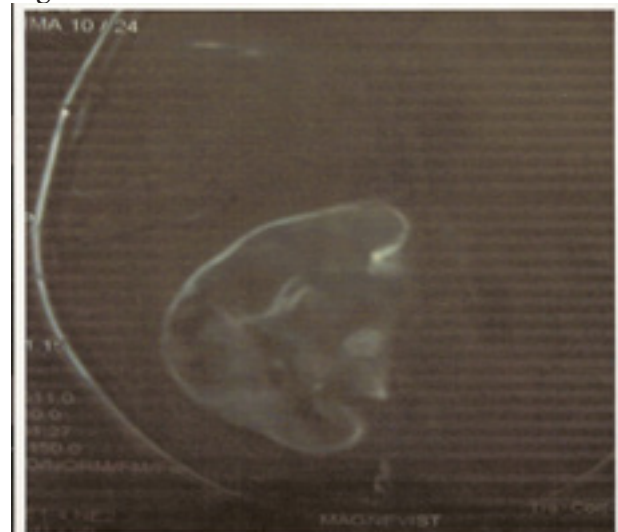


Figure 1: The Dimension Appeared in CT Record.

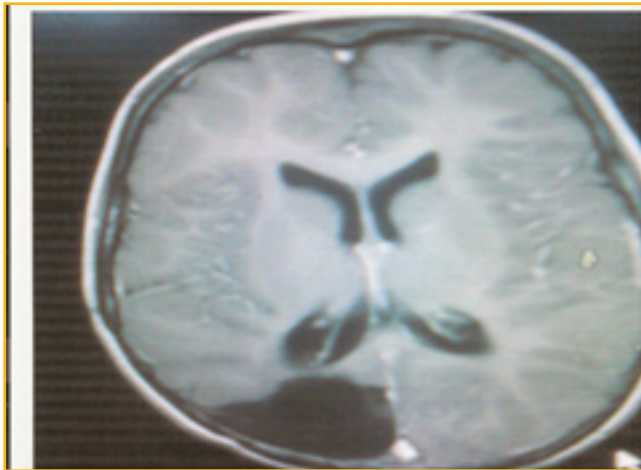
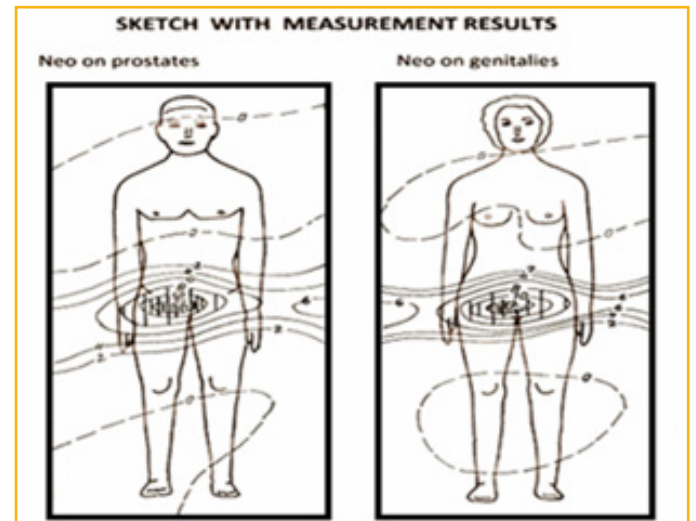


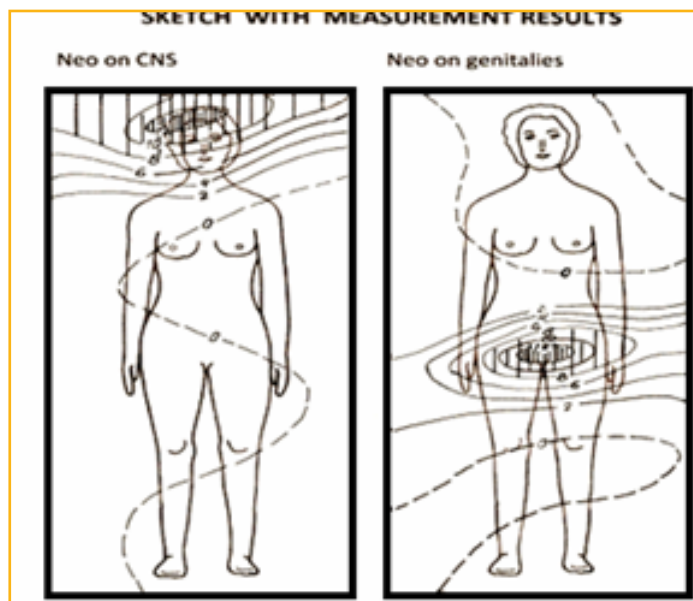
Figure 2: shows the Neo CT record after one year of staying in the natural EMF.

The connection between the Neo appeared and the Az was confirmed.



Sketch 5

Sketch 6



Sketch 3

Sketch 4

Sketch 4. shows Neo on genitalies C 53.1. This bed space was, mostly, undisturbed. An outstanding Az was registered in the central bed's part where the bed user's genitalies were, and she got Neo on genitalies. The connection was confirmed here. The user was warned to eliminate the Az cause, which was, probably, done. Sketches show 5 and 6. Neo on colon - C 18.79 and Neo on genitalies - C 53.1. These single beds spaces were mostly undisturbed because no Az were found with the natural EMF in their most parts. The central beds' parts were covered with the Az above 10 μ T, where colon (Sketch 5) and genitalies (Sketch 6) were placed.

The common thing for the presented Sketches 1, 2, 3, 4, 5 and 6, was that the Az was located only on the body parts where diseases appeared, which is a clear in-situ proof that the external surrounding the Az is the Neo cause. In addition, there were meta appearances with none of the patients from the above Sketches. This points that the remaining part of beds have no Az formed which could, firstly, create a body viscous magnetization (BVM) in the bed's users [3,4], being a condition for Neo appearance. It could be concluded that with no BVM there are neither diseases nor meta. BVM occurs when a body part is placed in the AMF, i.e. the Az.

Sketches with Neo and Metastases

Sketch 7 shows Neo on the breast with meta C 50.0. This bed space was extremely disturbed and was characterised by a high AMF over the entire bed. A distinct Az was registered in the part of the bed during the night rest and the right breast was diseased. Here, metastases were found on armpit lymph nodes. The connection between the Az and the disease was obvious. This bed user was, immediately, moved into a space with no Az. After a few years, scintigraphy registered the accumulation of radioactive markers in the head's region. The cause was discovered and it was metal hairpins (Figure 3), and after not using them for two months a medical check-up

showed that the health state was normal. After some time, scintigraphy discovered radioactive accumulation in the shoulder region. The cause was found and removed (it was a wardrobe lock – Figure 4). After two months, the medical check-up showed that everything was normal again. After this, the person is alive and healthy for more than 17 years. On the contrary, nine of her hospital roommates suffering from the same disease (Neo on breast and meta) all died within three years. The survived woman’s comment was: “I am lucky because after measurements taken, the Az was eliminated from my bed.”

Sketch 8 shows Neo on breast with meta C 50.0. This bed area was largely covered with a higher AMF. A high Az was registered in the area of the bed user’s breast during the night and day rest. After a few years of sleeping there the bed user got Neo on her breast, metastases were found on her armpit lymph nodes. The connection between the Az and the disease was clear. During the person’s medical treatment a doctor strictly requested elimination of the Neo only in the breast area, and no other therapy was accepted. Chemotherapy, radiotherapy and hormone therapy were rejected. Measurements at her house and weekend cottage were carried out. She was informed in what kind of space she should spend her day and night rest, which she accepted immediately and started to use the space with no Az. For more than 10 years she is alive, and the oncologists are surprised. She said that her hospital roommates with the same diagnosis and surgical operation, died very soon after that. They were treated by the breast surgical radical operation followed by chemotherapy. Only one of nine of them survived because she was moved away from the Az.

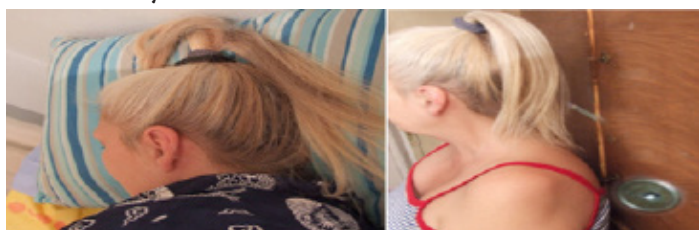


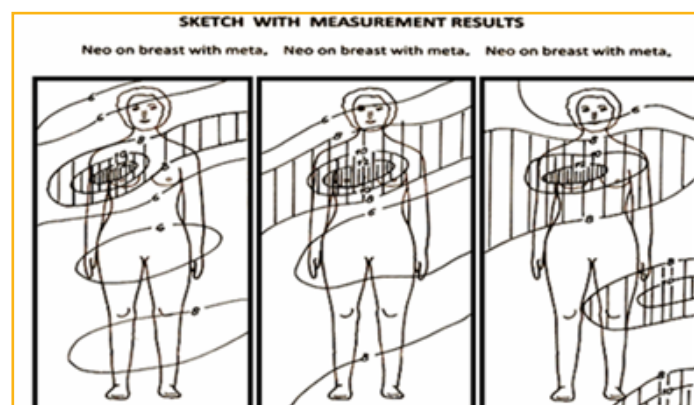
Figure 3 & 4: Patients with Sketch 7.

Sketch 9. Shows Neo on the breast with meta C 50.0. The AMF measurements took place in 1995. The connection between the Az and Neo location was confirmed. There were eight cases, only one woman

survived and is completely healthy. Her comment was: “I am fully aware that moving into the healthy area saved my life.”

Sketches with tumour (tu) (it is not known whether sk. 10 and 11 are malignant, sk. 12 malignant) where recovery occurs with no medical intervention

Sketch 10 shows Tu on head, Sketch 11 shows Tu on prostate and Sketch 12 shows Tu on breast (malignant). The connection between Tu on head, prostate, breast and the Az was clear. There were three patients who refused all the medical help except the elimination of the Az from living spaces, which was carried out. The disease withdrawn, i.e. Tu cells in the natural EMF regenerated with all the three diseased. Probably, the diseases were in the starting phase, so there was no permanent cells magnetisation. More than 17 years have passed from the tumour appearance.



Sketch 7	Sketch 8	Sketch 9
<p>LEGEND</p> <p>Relatively normal M-EM field</p> <p>Az very notabir M-EM field</p> <p>Isoanomalies of magnetic-electromagnetic quantities increase μT</p>		

There is documentation about a large number of measured beds used by people with Neo. In all the beds the connection between the Az and Neo was confirmed. The presentation of a large number of sketches is unnecessary, since the EMF measurements have been performed in the cancer patients’ beds over 30 years (over 1500 measurements).



Figure 5: The monacle under the eye caused by basocellular carcinoma.



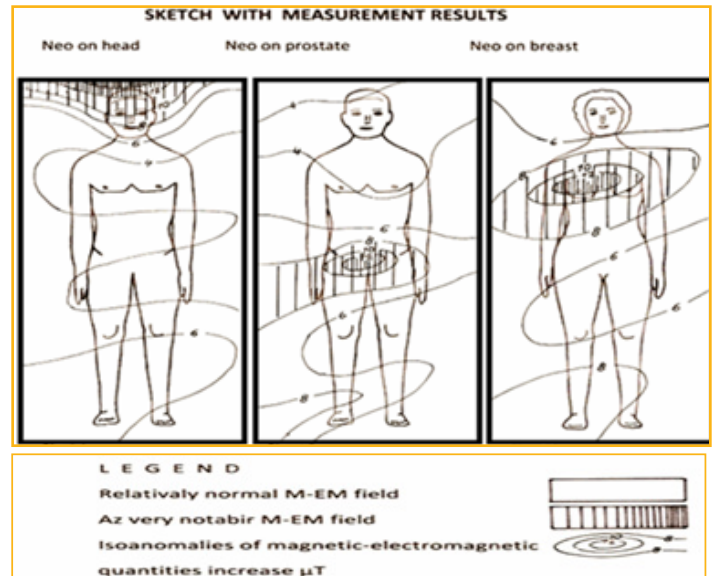
Figure 6 : The cross under the pillow caused planocellular carcinoma.

Measurement techniques are geophysical instruments, and geophysical measurements and the interpretation of the measured values performed.

People place things in the wrong way and, being unaware of it, surround themselves by the materials which are the pollutants of the living spaces magnetic and electromagnetic fields.

Explanation of Etiology Obscurities, Found In The Literature

In the literature about the Neo there are data which have not been explained. These unexplained subjects are explained in the following text.

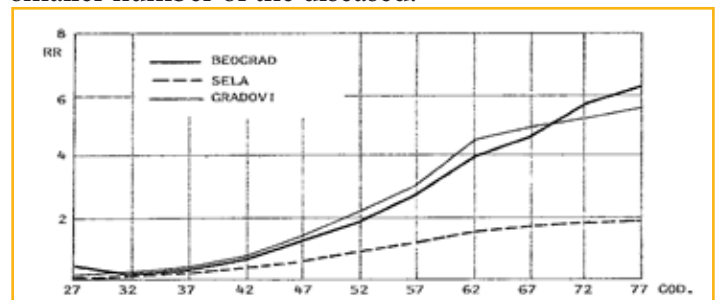


Different Number of The Malignant and Cardiovascular Diseases (Cvd)

“Malignant tumours, after cardiovascular, are the most frequent death causes in the majority of the developed countries of the world” [3,4]. Explanation of this different number of the diseased is in the frequency of the AMF (more frequent) as a cause of CVD, and variable AMF as the Neo cause is less present in the people’s living spaces.

Cancer Appearance Results Obtained In Cities and Villages

Cancer appearance results obtained in cities and villages (graph 1) clearly shows that city inhabitants are much more exposed to the variable AMF than the village ones [5]. The village inhabitants spend a lot of their time in the natural EMF, which is a great contribution to the smaller number of the diseased.



Graph 1 [5]

Textile Machine Female Workers Found To Be More Frequently Victims of The Right Breast Cancer Disease

“Textile workers operating on machines were found to be more frequently victims of right breast cancer disease. This case has not been explained so far.” [5]. The workers operate on the machines mostly with their right hands and, after that, sleep on their right body side, so the right breast is more exposed to the AMF source, therefore, endangered.

According To Lowseley and Kirwin (1979), Urothelium Tumours are More Frequent on The Right Side Ureter than on The Left Side Ureter

“According to Lowseley and Kirwin urothelium tumours are more frequently found on the right side ureter than on the left side ureter” [6]. The explanation is as follows: right side kidney is located lower than the left side one, greater number of people sleep on the right body side and AMF decreases with the increase of the distance from its source, therefore, the right side kidney is closer to the contact bed-human’s body. AMF vectors’ direction is always towards the bed user’s body. Now it is clear why there is more those who have the right kidney diseased than the left side one.

During The Benzantracen Methylation Cancerogenous Influence Increases

“During the benzantracen methylation, cancerogenous influence increases” [7]. Since methyl (CH₃) is a molecule with paramagnetic characteristics, it is normal that with the increase of CH₃ molecules number, additive substance magnetic characteristics increase, therefore, a logical conclusion is “cancerogenous influence” increases.

Experimental Research on Animals

Experimental research obtained on animals with implanted oncogenes have several, moderately said, surprising aspects. Firstly, most of the tumors appearing are monoclonal, despite the fact that each somatic cell bears identical transgenic oncogenic construction. Secondly, the percentage of animals which get tumor is 20-30%, but why not all animals? Thirdly, in many cases the latent period is unexpectedly long - but not much faster, while all the genetic predispositions are present all the time in each somatic cell” [8].

The explanation is: The first, since the AMF is a variable vector, and this vector is tied with a point and influences only upon one cell (most often), it is absolutely clear why the occurred tumours are mostly monoclonal. The

second, only the animals spending most of their time in the areas contaminated with cancerogenous AMF (20-30%) get tumor, therefore, it is absolutely clear why the minor part of the transgenic animals get the disease. The third, areas with the AMF firstly must build the BVM of an organ or part of an organ where atumour will appear. This building needs time and that is why the latent period is long, “a large number of people spends time in the AMF but not all get diseased” [8].

Nobel Prize In 1966

Nobel prize given in 1966 for the work “Discovering the Virus which Causes Tumours... Those tiny subcellular organisms having RNA as their inherited basis [9].” The interpretation of this mistake, concerning the Neo appearance, is as follows: RNA is a protein with distinct paramagnetic characteristics because it is synthesized by the molecules which are paramagnetics [1]. Virus enters a host cell and starts multiplying. If the organ with viruses is in an anomalous magnetic field, then it supports the organ to form BVM. In such surroundings, a paraoncogen mutation is easily performed, consequently the cancer appears. Viruses are only BVM appearance accelerators, but not the cancerogenous causes.

Smoking and Cancer

This subtitle may also mean cardiovascular and many other diseases are found with smokers by the official medical science, more oftenly than with non-smokers. The explanation why smokers more oftenly get diseased, is in the paramagnetic characteristics of the tobacco smoke substances. In ref. [1] it is shown that each cell has its magnetisation and it is the strongest in the cell’s nucleus, where chromosomes and mostly chromatine substances are. During the tobacco cells burning, the magnetised particles (from cells) enter lungs, blood and, through blood vessels, other organs with smoke. Since they have paramagnetic characteristics, they accumulate in the space with increased magnetic flux, what is logical. This is why the tobacco smoke particles, as paramagnetics, accelerate BVM creation in an organ or its part. This is a clear explanation why tobacco smoke is very harmful for many diseases which can be connected with the AMF. Conclusion would be that tobacco smoke is harmful not as the Neo cause but

as the BVM appearance accelerator. The AMF from external surroundings is the main cause of diseases statistically connected with smoking.

Malignant Cells Presence In Blood - Carcinemia - Is Frequent With Neo

“Malignant cells presence in blood - carcinemia - is frequent with Neo. This, of course, still does not mean metastasis” [10]. In order that malignant cells perform colonisation (metastasis) it is necessary that the AMF creates the BVM in an organ. As the very malignant cells have magnetisation, colonisation can be found only in the tissue in which there must be the BVM formed, and then metastases occur.

Asbestos

Officially, asbestos is a cancerous material. Chemically, asbestos is magnesium and divalent iron silicate, which makes it difficult to dissolve and has an increased susceptibility. These characteristics force asbestos to accumulate in the area under the AMF influence. Now it is clear why in the lungs tumour there are: microscopic asbestos “bodikins”. These bodikins penetrate through to the cell nucleus membrane (where they stay unchanged) because the cell’s magnetisation center is in the nucleus [1]. Asbestos accumulation accelerates the BVM in lungs and nothing else.

Radioactivity and Cancer

Areas with radioactive accidents (nuclear station damage, atomic bomb etc.) show the appearance of the larger Neo number. The explanation is the following: An increased radioactive gamma radiation is present during the mentioned accidents (it should be noted that natural gamma radiation is manifoldly useful for the living world on Earth). Largely increased gamma radiation can cause radioactive damage to living beings similar to “burns”. The increased number of malignant diseases is the result of DNA increased mutation because of the manifold increased gamma radiation. Elementary gamma radiation quanta by hitting, for example, hydrogen which, by weak chemical connections, ties nitrogenous bases to DNA scales, strikes it out from equilibrium and nitrogenous bases connections get weaker. If there is the AMF where a person sleeps, the structural formula magnetic rotation on the bases previously connected by hydrogen happens, and this

is mutation. It is logical that paraoncogen can, in this occasion, transit into oncogen. The conclusion is that, when gamma radiation is manifold increased, the genes on DNA mutation possibility is increased. BVM creation of the body part where the AMF is present is, also, accelerated because all radioactive elements and some substances are paramagnetics.

Proof That Malignant Cells are magnetized

The proof that malignant cells are magnetized is nuclear magnetic resonance. In order to clearly notice the tissue with Neo, applications are injected into blood, which is a paramagnetic marker. In the most recent method cancer cells are caught by the magnetic poles from blood flowing over the magnetic poles, after that they are sent to the laboratory for further testing. Therefore, it is clear that cancer cells are magnetised because they were created in the Az produced by external surroundings.

Breast Tissue Density

“Breast tissue density on mamography equal to or greater than 75%, is connected to increased risk compared to mamography finding without increased density (RR 5.0.95% CI 3.6-7.1); (16)” [11]. Breast tissue density greater than 75%, is connected with more serious breast cancer risk. A good proof that the AMF from the external surroundings is breast cancer causes is tissue density (breast cell). After a long time spent in the AMF, breast density increases, which results from the BVM appearance, when substances with paramagnetic characteristics concentrate. Basic characteristics of the magnetised substances are that inter-molecular distances get shorter, which means density increase. Suggestion: Therefore, this characteristic can be used for prevention, before paraoncogen mutation occurs, in order to prevent cancer creation. After finding the increased breast density, the AMF should be eliminated from the patient’s living areas so that cancer cannot be created.

Sunbathing and Skin Cancer

Sunbathing increases skin cancer diseases, so people are adviced to avoid sunbathing. This is not true because during sunbathing the skin gets red because it is heated and its temperature increases. With skin burned in this way, a person goes to bed with the AMF. After a longer staying there, skin gets less inflamed and then, there appears body viscous thermo-remanent magnetisation

(TVBRM) stronger than the BVM, which is the first condition for skin cancer appearance [3]. Gene mutation is possible, and there is the second condition, then Neo can appear. Sunbathing only accelerates TVBRM creation. Sunbathing is necessary because of D vitamin in the organism and for human reproduction because it enhances sexual potential. It can be concluded that we should insist on the AMF elimination, but sunbath as much as possible.

Temperature and Cancer

Materials-substances with paramagnetic and ferromagnetic characteristics are oriented in the magnetic fields. Temperature is opposing to this. It is found that DNA in space has a form of double spiral (helix-like structure). These two spirals can be separated by a cautious heating and connected again by cooling. This is a clear proof that DNA chains are tied by weak magnetic and electromagnetic forces. It is a known fact that tumor tissues are sensible to temperature. There are many works about hyperthermia as a therapy, but results are unexplained and unclear. It is thought that the most important is the space where therapy is applied. The therapy must be applied only in natural EMF. If not, BVTRM will be created and Neo will advance faster.

Genetic Predispositions

Official medical science mainly connects Neo appearance (CVD, mental disturbances etc.) with genetics. The explanation is that in older ages inclination to getting these diseases is not possible to inherit, but habit to live in an enormous AMF can be created. These living spaces pollutants are characteristic for all residential spaces. When a person gets used to living in the AMF then she or he, unconsciously, searches this polluted space to stay in. Many experiments show this clearly.

Cell's Natural Death Explanation

Chromosomes magnetise and demagnetise during division [1]. Magnetisation and demagnetisation possibilities are limited for all substances. It is known that telomeres (chromatides' ends) with larger divisions number (cca 50) become thinner and shorter (they peel off), therefore, they cannot magnetise easily because inter-molecular magnetic forces are weaker, shorter, so a cell ends its life cycle [12].

Eternally Living Malignant Cell

Eternally living malignant cell is created by a mutation

only in the AMF. Malignant cells' telomeres, already created by mutation, can regenerate by new paramagnetic molecules because external surrounding the Az, present in the tissue, concentrates, i.e., produces enzymes and proteins with the increased magnetic characteristics, and BVM is formed [3,4]. In that area, cancerogenous substances marked as electrophiles accumulate, i.e., paramagnetics [13]. In science they are called chemical causes of Neo [1, 9]. This means that telomeres' ends, after a lot of magnetisations and demagnetisations, loose magnetic properties, so they are replaced by new paramagnetic substances, this is constantly happening, which explains why the cell divides a limitless number of times, that is Neo.

Low Frequency Electromagnetic Fields Help Fighting Cancer

By the end of 2011, a group of scientists from the USA, France, Switzerland and Brasil published results about "Treating the Advanced hepatocellular Carcinoma with Low Amplitude of Modulated Electromagnetic Fields", in "British Journal of Cancer" [14]. The treatment is based on tumor exposing to low frequency electromagnetic waves. It is not explained in the published work how and why this new therapy method seems to be successful as anti-tumor treatment of the patients with advanced hepatocellular carcinoma. There is a brief explanation why this method is applicable in the treatment of all MD. This therapy is applicable because of the reason which clearly confirms the cancer cause. As it is known, a tumor occurs after forming BVM of an organ or its part, then paraoncogene into oncogene mutation occurs and a tumor grows progressively. The BVM formed is the surrounding with high magnetisation, and only in such surrounding cancer cells advance, i.e., divide limitlessly, spreading around on the account of a normal tissue. To demagnetise some material, frequent electromagnetic fields must be applied, which force elementary micro-magnetic domains to disorient, i.e., elementary micro-magnetic vectors get chaotic directions. The result is a destroyed cancer tissue BVM. In this environment malignant cells do not function and natural cells spread on the account of tumor tissue. Therefore, the researchers must perform the therapy only in the natural EMF, which has been explained in the previous sections. Only in this way the research

results will be valid and the therapy will be more successful.

Conclusion is the suggestion to place every patient into an area with no Az. With the time spent in such areas all the BVM will disappear from the body. Therefore, the AMF measurements in the living spaces of the diseased are necessary, because only placing the diseased in the natural EMF the post-operative recovery leads to total recovery.

Literature Shows That Cancer Behaviour During Various Therapeutic Methods Application is Unpredictable

First if all, the BVM occurs in an organ or part of an organ, then paraoncogene mutates into oncogene and cancer develops progressively. By the cancer tissue surgical elimination, it is usually impossible to fully eliminate the BVM. That is why some cancer types recur quickly, some slowly, and some get eliminated, i.e., patients get healed. It all depends on the occurred BVM size and number, as well as on the phase in which surgical operation is performed on the tissue affected by cancer. Unpredictable behaviour is, also, caused by a deliberate or incidental change of the patient's living space, what can, even, cause full self-recovery. This is, usually, explained by some given therapies (various diets, teas, shark cartilage, the living space changed because of geopathogenic radiations etc.), what has nothing to do with the recovery, what is, often, a great delusion of the patient and those who suggest it.

Literature reported that, sometimes, the same type of cancer behaviour upon various therapies application is unpredictable, which is bringing much confusion to oncologists. If the above presented is understood, than it is clear why this is so. Therefore, the diseased person is most often in the areas with various AMF and that is why the same cancer type response to various therapeutic methods is various.

At the end of this section, the necessity of a surgical operation of advanced tumors must be pointed out because as larger as possible mass, affected by the disease, must be eliminated, because every BVM depends on the size, i.e., on the mass affected by unnatural magnetization. Then, the diseased should be placed in a natural magnetic field and apply chemotherapy

as a therapeutic procedure. Hyperthermia should be applied, mostly, on the body parts from which it is not possible to fully eliminate tumor. With this therapeutic method the number of deaths caused by this disease will be reduced. Therefore, the best prevention for the large number of diseases is to live in the natural EMF.

A Large Number of People Spends Time in High Amf But Small Number Gets Diseased

A large number of people spends time in high AMF but small number gets diseased... Why? The explanation is that during the night sleep, a part of the body located in the AMF forms BVM, for example, breast. After a few hours of sleeping, a person gets up and does everyday work. While moving and working out of bed, BVM degrades, what can be repeated by days, months and years not creating Neo. Then, who gets diseased? The person who, while working (for instance on computer, some machine or in kitchen etc.), enters into the AMF again with a breast, continuing to support the BVM or even making it stronger. During the night, he goes to the same bed with the AMF, again, the BVM gets even stronger and spreads, this being repeated for days, months and years makes conditions optimal for Neo appearance. This breast example can be applied to other organs. The conclusion is, if one organ is placed, during working, day and night rest in the AMF, relatively quickly, the BVM will be created. Paraoncogene mutation occurs during sleeping because body is not much moved from one place, so oncogene, that gives the clonal origin of cancer, forces a cell to divide endlessly and it is a malignant cell.

Presentation of an Experiment Results in the Hospital with 40 Psychiatric Patients

An experiment was carried out in 2015 in a psychiatric hospital where one room in the male department was equipped with ten beds, and all the AMF were removed, so that psychiatric patients slept in the natural EMF for 30 days. After them another 10 patients stayed in the room for 30 days. So that's a total of 40 patients who stayed for a month in the room with the natural EMF, i.e. ecological room. Before entering the ecological room, we made complete laboratory analysis and then again after 30 days. The results are excellent, as can be seen from the following laboratory examples:

S-CK creatine kinase (myocardial isoenzyme diagnostic indicator) is 4.5 times higher in the AMF, or in the natural EMF it is 4.5 times lower.

Based on the verbal information from a psychiatrist doctor at this hospital this enzyme is moderately increased in acute psychotic attack. [8]. An enzyme that marks testicular cancer of stem cells S-LDH is nearly 4 times higher with patients who were sleeping in the AMF. Phosphatase that adds phosphorous group that is used for energy production through ATP molecule is 3.5 times higher in organic beds. The content of thrombocytes in the blood is 2.6 times higher in organic beds. The content of calcium in the urine is 4 times higher in the AMF, which can lead to an increased number of patients suffering from atherosclerosis. From all of the presented there are two clear conclusions. The first is that the only prevention from Aid is to live without the AMF present in residential areas. The second conclusion is that IS works good when there are no AMF in the living areas, and people should live in the natural EMF and then the IS works well and protects the body from the intruders.

Discussion

This section will present the issues in the research on the cause of cancer. The presented examples are selected from the multitude of cases of the AMF measurements in beds in which patients spent night and day. The cause of the cancer was very quickly discovered, by studying the etiological facts and knowing the situation and propagation of the AMF in peoples' residential areas. The problem was to force the patient to leave the pathological place of residence because of a habit to enter the present AMF, subconsciously, by inertia. There are experimental evidence of patients entering the AMF without noticing that they are in it. This is a very difficult problem for the researchers. Medical condition of a patient staying in the natural.

EMF was monitored, in order to show a complete research and its results. The authors published the results parallel with the research, first at local and later on the European and World congresses, conferences and counsels of professional people. The results were spectacular. After long years of research a problem appeared by official science and people in the government

(ministers of health, ecology, etc.). They prevented spreading the research results among the people. They have also banned the media from publishing the results presented in the above mentioned scientific meetings, and to show works that were selected by the Scientific Committee. Those problems are still present.

The authors believe that the reason for such behavior is the inertia in the heads of authorities. All their life they were convinced that, for example, that cancer is influenced by numerous risk factors, and those are the facts remembered in the minds of the people with the potential of 100 mV (millivolts). The information which documents that the only cause of cancer is the AMF from the environment, is received in the brains with the potential of 1-3 mV. To raise the potential of such newly received information, those people need time, their own experience in measuring of the AMF and monitoring patience in the natural EMF, and to understand explanations of etiopathological facts.

Those facts point that statistically determined risk factors are explained. It is also been said that there was a misinterpretation of cause and effect. It should be noted that the cause of each cancer is the AMF. Studies that have persisted for more than 25 years present evidence of the effects of the AMF on a cancer, i.e. different types, which means they are practically the same for all forms, regardless of whether they are initiated into different parts of the body. When we talk about the location of any cancer (breast, colon, rectum, prostate, lung), the cause is the same, i.e. the AMF with variations. From everything presented there is a need to eliminate the AMF from the living spaces which will be the greatest help to the patient and the physician in the treatment.

Note that this paper usually refers to the literature published by the same authors. Studying literature, biological, biophysical and physical, there wasn't anyone in the world that had a significant research results on these issues to refer to them. Over 30 years, the authors have been dealing with the influence of physical fields on living world, and the largest number of published papers are on the etiopathogenesis of various diseases and physiology. As far as it is known, there are no similar published works, so that is the reason why the authors refer mainly to their published works.

Conclusion

The connection between the anomalous zone and the body region diseased by cancer is confirmed. Observing the health condition of the malignant diseased patients after moving from the anomalous zone and staying in the natural Earth magnetic field, there are no relapses. Explanations of etiological obscurities are complementary with the previous, therefore, it can be concluded: MALIGNANT DISEASES CAUSES ARE MAGNETIC FIELD ANOMALOUS ZONES IN THE SPACES WHERE PEOPLE SPEND THEIR DAY AND NIGHT REST.

For better therapeutic results the most important is to move the patient away from the anomalous zone and locate them in the natural earth magnetic field. Low frequency electromagnetic field application, as a therapy, must be performed only in the natural Earth magnetic field. Hyperthermia application, as the therapeutic method for neoplasms where cancer has not been surgically completely eliminated, should be performed only in the natural Earth magnetic field.

The results of the experiment obtained in the psychiatric hospital and the diseased people with a habit to spend their time in the AMF gives a conclusion that it is necessary to build hospitals where there is no AMF and in such spaces to treat the people diseased with Neo and other diseases, such as CVD, diabetes, mental disturbances, auto-immune and other diseases. Since hospitals for palliative care of diseased people are being opened, it is necessary to use these spaces and rearrange them so that the patients would not be able to enter into the AMF. It is, also, necessary to expand therapy with hyperthermia with advanced diseases, but, only in the natural EMF. In that way the number of deaths would drastically be reduced and the treatment would be cheaper.

Reference

1. Trifunovic N, Cizmic V (2014) Breathing Enables the Magnetic Properties of Erythrocytes (HEM Fe) Oxygen, Cells and Carbon dioxide, Journal of Health Science 2: 270-283.
2. Catalogue classification.
3. Nedeljković IS, Kanjuh V, Vukotić M (1994) "Cardiology", Belgrade.

4. Trifunović N., 1998, Contribution to Knowing of Earth Magnetic Fields Enormous Intensities in the Etiopathogenesis of Cardiovascular Diseases, I Symposium of cardiovascular hospitals of Serbia with international participation - News from cardiology – Sombor 2.
5. Djordjević M (1989) "Epidemiology of Breast Cancer", Jugoslavija publik, Beograd 2.
6. Suša S (1979) "Endemic Nephritis", Savremena administracija, Belgrade 2.
7. Djurić D (1966) "Biochemistry and Biophysics of Industrial Poisons", Institute for Professional Qualification of Health Workers of SRS, note 10, Belgrade 2.
8. Dimitrijević B (1994) "Cancer Civilisation Challenge", Institute for Nuclear Sciences Informer, "Vinča" No. 7, Belgrade 2.
9. Diklić V, Kosanović M, Dukić S, Nikoliš J (2001) "Biology with Human Genetics", Medical Faculty, Belgrade 2.
10. Maksimović N, Spanopoulos K (2008) Descriptive-Epidemiologic characteristics of Lung Cancer in Serbia, Medical Review, University in Belgrade, Medical Faculty, Institute for Epidemiology of Belgrade University, Medical Faculty 6: 16-21.
11. Andjelic S, Djakovic E (2007) My right to be healthy, "Research on Reproductive Women with Invalidity Health", July, Belgrade, Serbia.
12. Guyton A Hall J (2010) "Medical Physiology", Contemporary Administration, Black Sea Belgrade 7-9.
13. Hraboč B (1991) "Information about Cancerogens", Novi Sad, Serbia 2.
14. F P Costa, A C de Oliveira, R Meirelles, M C C Machado, T Zanesco, et al. (2011) "Treating of Advanced Hepathocelular Carcinoma with Low Amplitude Modulated Electro-Magnetic Fields", Britih Journal of Cancer 105: 640-648.

Copyright: ©2020 Trifunovic Nikola. This is an open-access article distributed under the terms of the Creative Commons Attribution License, which permits unrestricted use, distribution, and reproduction in any medium, provided the original author and source are credited.